

# ENTRETAN(10)

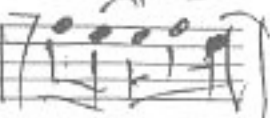
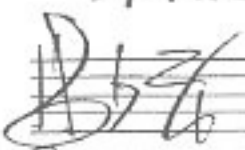
①

SAMBA

INTRO →

F7M C4(9) F7M C4(9)

VIOLAO



① F7M C/E 2 Dm7 Dm7/c 3 Gm7 A7

Dm7 G7(b13) C4(9) C7(9) F7M %

Em(b5) A7(b13) Dm7M Dm7 C4(9) C7(9)

Em7 F7 F4(9) F7(9) Bb7M %

A7 A7(b13) Dm7 % Cm7 F7

Bb7M % C4(9) C7(9) F7M C4(9)

② F7M % Em(b5) A7(b13) Dm7M Dm7

C4(9) C7(9) F7M % Em(b5) A7(b13)

Dm7 % Em7 F7 Bb7M Am7

Gm7 Gm7/c Em(b5) A7 Dm7 %